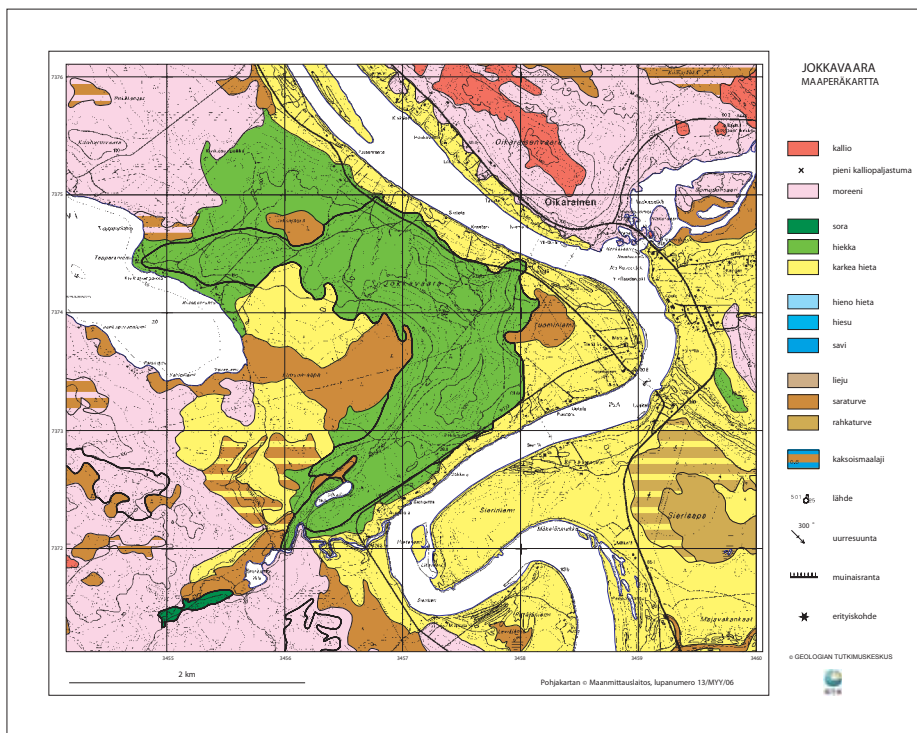


Ridges

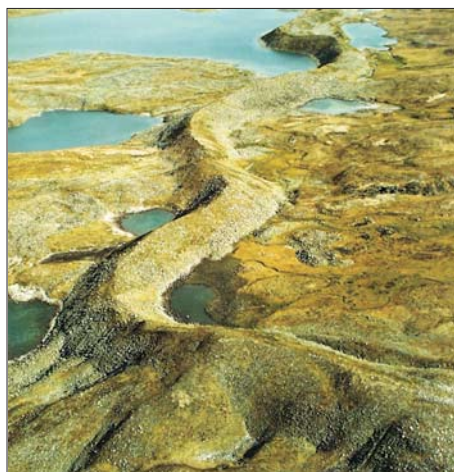


An old moraine-covered ridge



Taking sand and gravel at Jokkavaara

In the area of Rovaniemi, sections of ridge go from Mellalampi to Kolpeneenharju and from Muurola through Hietavaara, Kroopinpalo and Palovaara to Oikarainen. At Jokkavaara they merge to form a single ridge section.



The ridges are usually long and narrow. They often contain kettle holes created when blocks of ice embedded in the material of the ridge melted.

Rovaniemi's ridges are important stores of sand, gravel and groundwater. The majority of sand and gravel required in Rovaniemi is obtained from the area around the hills of Hietavaara, Jokkavaara and Vennivaara. The groundwater for the Rovaniemi area is obtained from Kolpene, Kroopinpalo, Palovaara and Jokkavaara.

Ridges were created by sand and gravel carried by the melt waters flowing from the glacier, at the time of the melting of the continental glacier. The melt waters flowed either on the surface of the glacier, under it or inside it. As it flowed, the water sorted and washed the rock materials, and, at the same time, ground the stones of the ridge into round shapes.

It is usually easy to build on ridges and they are easy routes for travelling along. People have lived in ridge areas since prehistoric times. Kolpeneenharju Ridge near Rovaniemi on the shores of Salmijärvi Lake has been inhabited since the Stone Age. Apart from being geological formations, ridges are also valuable from a point of view of scenery and nature.



A landscaped cross-section of a ridge at Raastaharju near Enontekiö.



A beautifully-shaped ridge in the area of Kolsa at Savukoski.